

SINK SPECIFICATIONS



DOUBLE BOWL Undermount

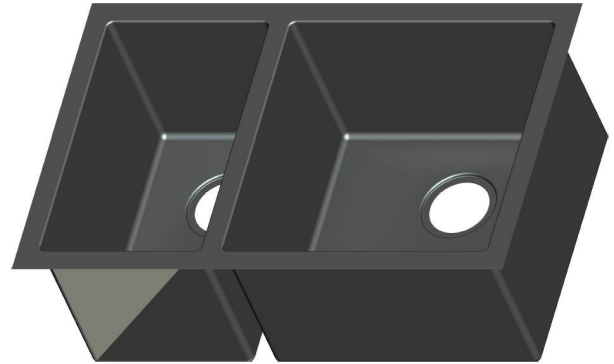
[Http://www.kolego.net](http://www.kolego.net)

Model GLGR2918D

0086-576-85682111

FEATURES

- * 16 gauge, stainless steel
- * SUS304 18/10
- * Long-lasting, easy-to-clean, satin finish
- * Sound-deadening insulation
- * Elegant and functional drain grooves
- * R10 radius corners
- * Rear drain placement



PACKING LIST

- SINK
- CUT-OUT TEMPLATE
- MOUNTING HARDWARE

NOMINAL DIMENSIONS

| Exterior Dim. | Depth | Bowl size | Gauge |
|-------------------|-------|---------------|-------|
| 29-3/4" x 18-1/2" | 10" | 9-7/8" x 16" | 16 |
| | 10" | 16-1/4" x 16" | |

